

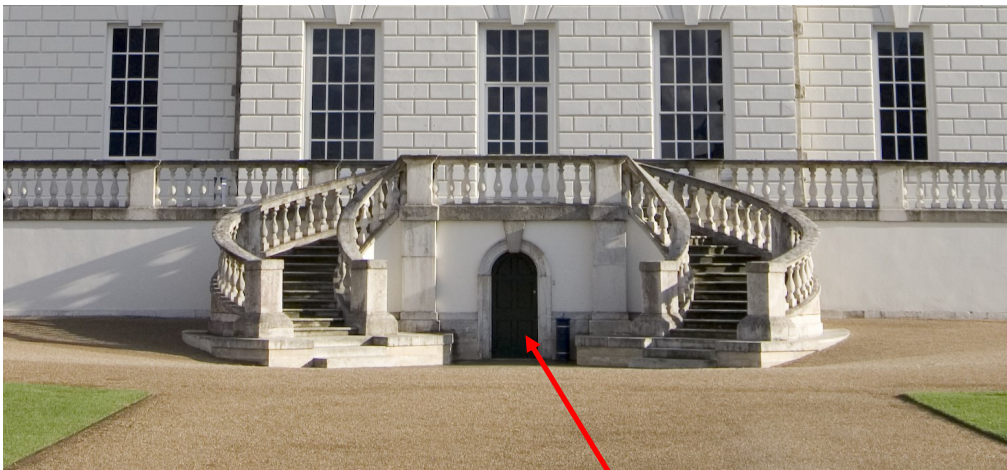
The Queen's House: Visual Guide

You can use this guide to help you choose what you want to see and do at the Queen's House.

This is the Queen's House in Greenwich.

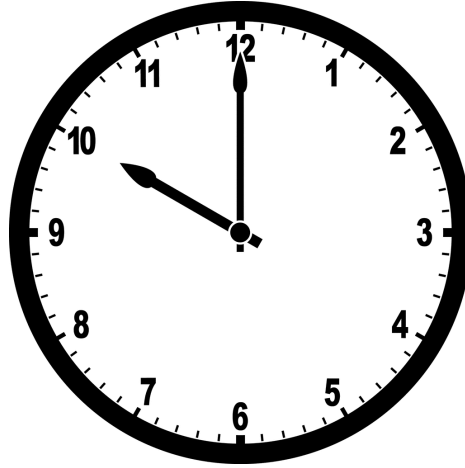


To get inside the Queen's House you need to go underneath the house, through the door between the curved staircases.



There are lots of things to see in the Queen's House.

The Queen's House opens at 10:00am.



The Queen's House closes at 5:00pm.



When you get inside the Queen's House, you will be welcomed by a member of staff.

Staff wear a blue uniform, with a badge.



To get inside you will come in through this corridor:



This is the Undercroft. Here you can:



Visit the shop

Leave your things in the
cloakroom or a locker.



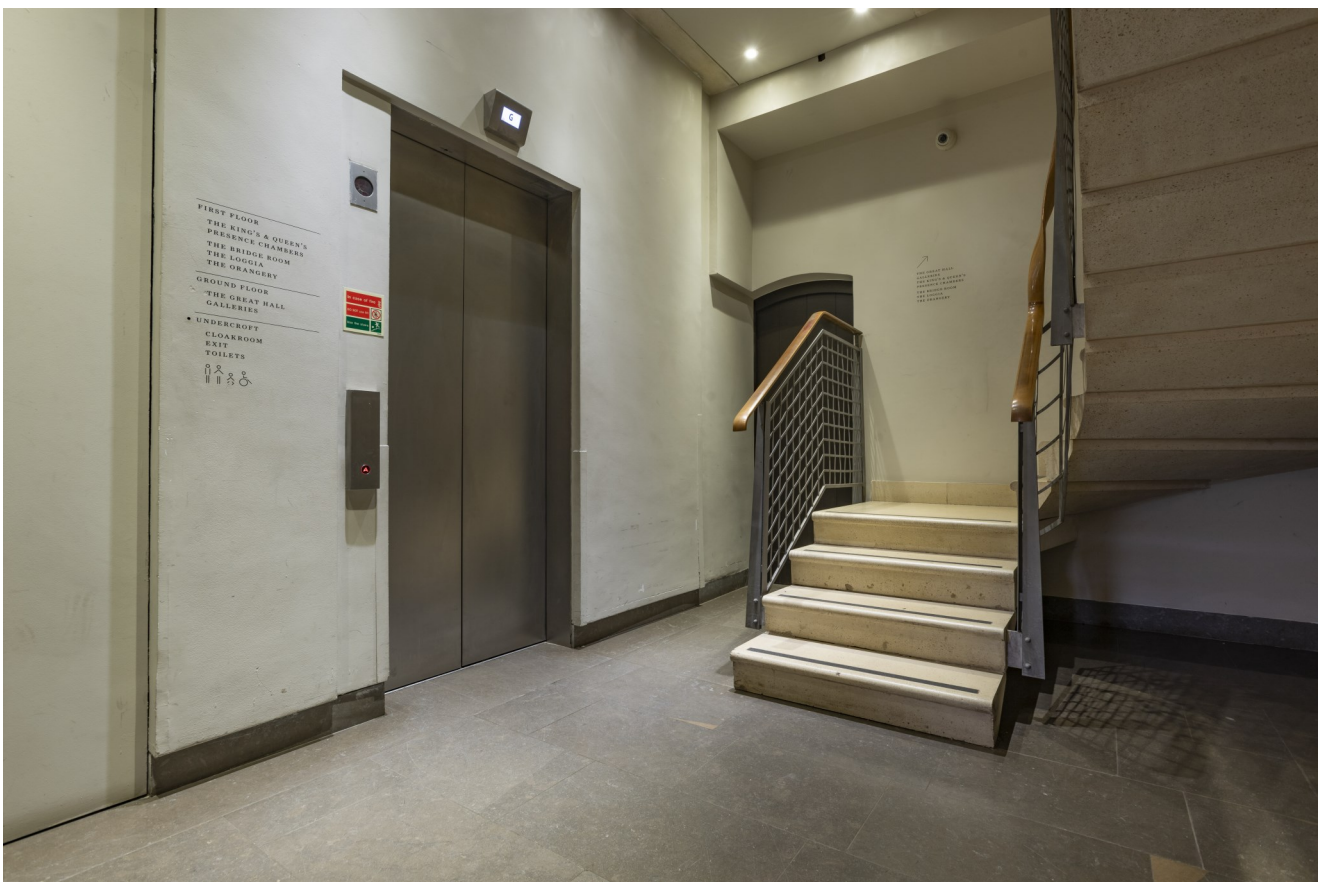
Go to the toilet

You can also watch a video about the restoration of the Armada Portrait.



When you have finished exploring the Undercroft, you can go upstairs to the Ground Floor.

To get there you can use the stairs or the lift.



On the ground floor you can visit:



The Headmaster's Library



The Headmaster's Drawing Room



The Great Hall

Also on the Ground Floor is:



The Assistant Master's Library



The Assistant Master's Drawing Room



You will also get to see the famous Tulip Stairs. You can go up these to get to the first floor.

If you need a step free route, you can use the same lift as before.

On the first floor of the Queen's House you can explore the rooms that were once the bedrooms and the presence chambers for the King and Queen.

The King's rooms that you will see are:



The King's Presence Chamber



The King's Anteroom



The King's Privy Chamber



The King's Antechamber



The King's Bedchamber



The Writing Closet



The King's Closet



The King's Outer Closet

The Queen's rooms that you will see are:



The Queen's Presence Chamber



The Queen's Anteroom



The Queen's Privy Chamber



The Queen's Antechamber



The Queen's Bedchamber

To see the Armada Portrait, go to the Queen's Presence Chamber.



There are two Queen's Closet's that you can visit.

You can also visit the Bridge room on this floor.



To go downstairs again, return the way that you came and use the same stairs/lift.

Useful places

The toilets

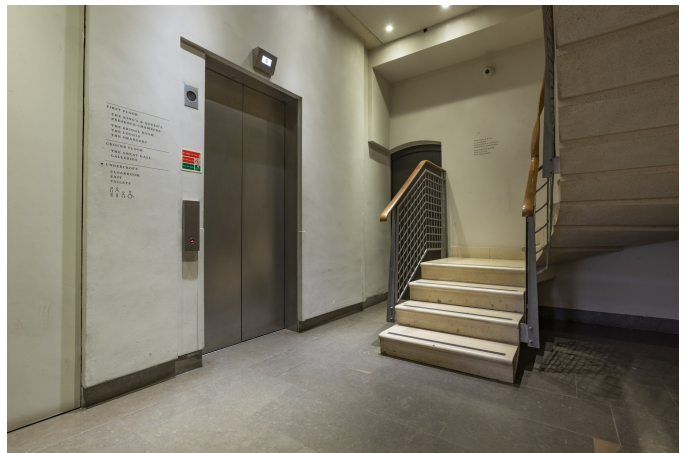
By the entrance to the Queen's House, in the Undercroft



The lift

By the Armada restoration film

Going up past the Headmaster's Study and the Queen's Anteroom



Useful information

If you would like to sit down

You can find seats around the Queen's House.



If you find the Queen's House too noisy

You can borrow ear defenders from the Welcome Desks.



There is a Changing Places facility next door, at the National Maritime Museum.

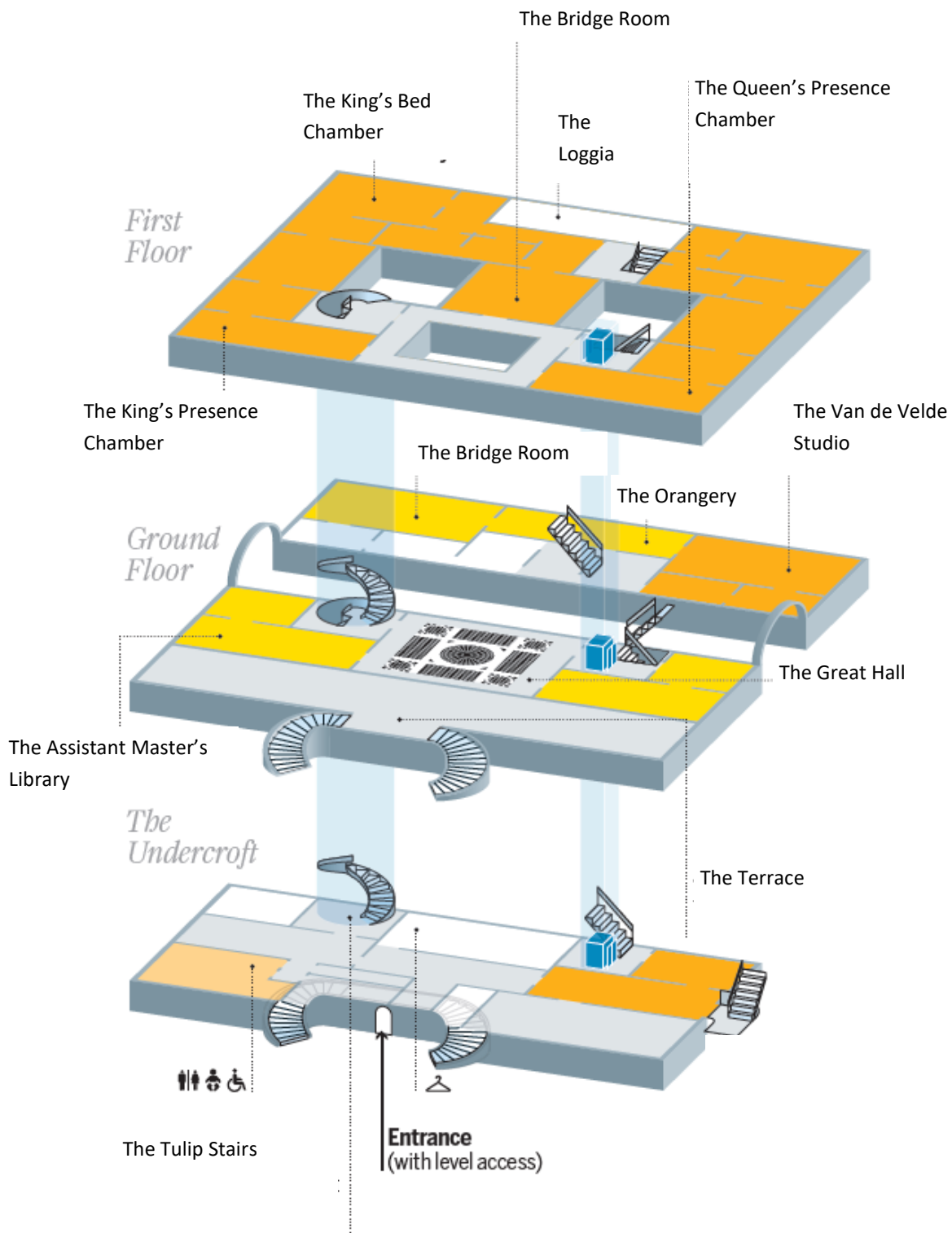
Speak to a member of staff for directions.

You do not need a key to access the facility.

You will need to provide your own sling.



This is a map of the Queen's House.



If you need help finding your way, you can ask a member of staff for help.

If you have any questions then you can speak to a member of staff.
The Ticket Bookings office is open 9am-4pm, Monday-Friday:
Tel: +44 (0)20 8312 6608 | Email: bookings@rmg.co.uk